

POSIWIRE®
Accessories
for WS® Position Sensors



Magnetic clamp MAG1

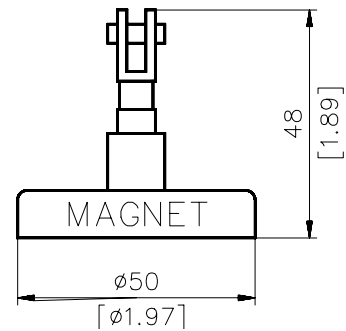
The magnetic clamp MAG1 is an easy way to fasten the measurement cable to ferromagnetic materials on the moving parts. The user can easily change from one application to another using this device.

Minimum Adhesive Force: ≥ 200 N (on bare steel)

Note: Coated surfaces will reduce the adhesive force.

Order Code:

MAG1



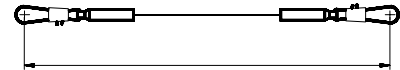
Cable extension SV1

Cable extension for ASM position sensors with cable clip

Order Code:

SV1 – **M**

Cable length in m (from 0.2 m)



Float

For best accuracy half the volume of the float has to be immersed in the fluid. The float should be filled with the same or a neutral liquid.

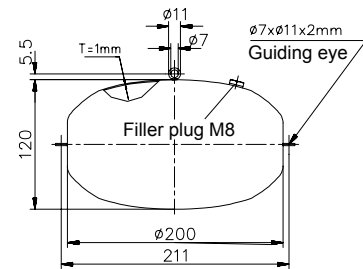
Weight: 1 kg approx.

Material: V4A Steel, DIN 1.4571

In running media the float can be stabilized by two guiding cables.

Order Code:

SCHWIMMER-200MM



POSIWIRE® Accessories for WS® Position Sensors



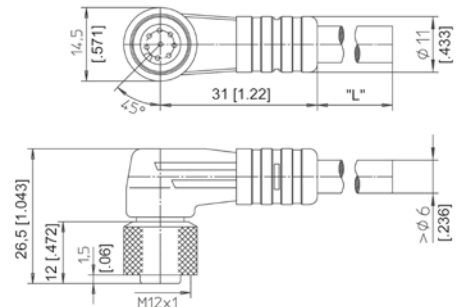
**Connector cable
for WS® position
sensors**
8 pin M12

The 8-lead shielded cable is supplied with a mating 8-pin 90° M12 connector at one end and 8 wires at the other end. Available lengths are 2 m, 5 m and 10 m. Wire: cross sectional area 0.25 mm².

Order code:

KAB - XM - M12/8F/W - LITZE
IP69K: KAB - XM - M12/8F/W/69K - LITZE

Length in m



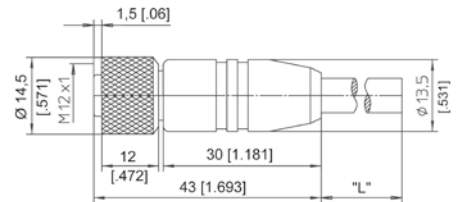
**Connector cable
for WS® position
sensors**
8 pin M12

The 8-lead shielded cable is supplied with a mating 8-pin M12 connector at one end and 8 wires at the other end. Available lengths are 2 m, 5 m and 10 m. Wire: cross sectional area 0.25 mm².

Order code:

KAB - XM - M12/8F/G - LITZE
IP69K: KAB - XM - M12/8F/G/69K - LITZE

Length in m



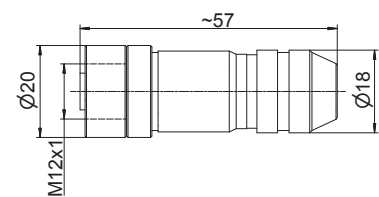
Connector cable wiring - M12, 8 pin	Connector pin / cable color							
	1	2	3	4	5	6	7	8
	White	Brown	Green	Yellow	Gray	Pink	Blue	Red

**Connector for WS®
position sensors**
8 pin M12

Female connector.

Order code:

CONN - M12 - 8F - G

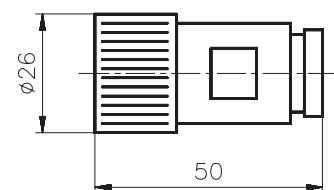


**Connector for WS®
position sensors**
12 pin CONIN

Female connector.

Order code:

CONN - CONIN - 12F - G



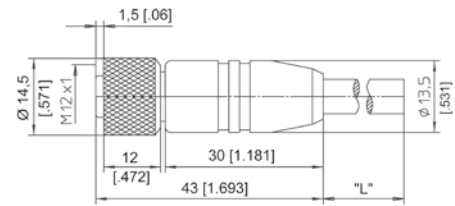
POSIWIRE® Accessories for WS® Position Sensors



Connector/bus cable for WS® position sensors

5 pin M12
CAN bus/DeviceNet

The 5-lead shielded cable is supplied with a female 5-pin M12 connector at one end and a male 5-pin M12 connector at the other end. Available lengths are 0.3, 2, 5 and 10 m.



Order code:

KAB - XM - M12/5F/G - M12/5M/G - CAN

IP69K: KAB - XM - M12/5F/G/69K - M12/5M/G/69K - CAN

Length in m

T-piece for bus cable

5 pin M12
CAN bus/DeviceNet

Order code:

KAB - TCONN - M12/5M - 2M12/5F - CAN



Terminating resistance

5 pin M12
CAN bus/DeviceNet

Order code:

KAB - RTERM - M12/5M/G - CAN

