

## PRODUCT RANGE CIRCULAR CONNECTORS



MUCH MORE VARIETY



**Huge Range M 8 to M 40**

**CIRCULAR**

**M 8**

Industrial Ethernet

#### Much more Variety

HUMMEL Circular Connectors are used in various industrial areas of applications. The product range includes the sizes from M 8 to M 40. Power or signal connectors, Industrial Ethernet or customized solutions – HUMMEL offers the right solution for every application. Flying connectors, male, female, straight, angled, panel connectors, also available as TWILOCK quick connect system. Versions in INOX are available for harsh environment applications.

#### Cope with all requirements

All HUMMEL Connectors meet the highest requirements on industrial applications. They fulfill the protection IP 67 and IP 69K (connected) and have a high vibration resistance. The 360° shielding guarantees a secure EMC-protection. HUMMEL Connectors have an exceptional quality and are internationally certified.





M 12 Power

M 27

M 23

Signal Connectors

M 12

Power Connectors

# CONNECTORS

Customized Solutions

PROFINET

M 40

M 16

M 23 RJ 45

M 23 Hybrid

M 40 Hybrid

TWILOCK

Moulded Cordsets

## Modularity and Flexibility

The compact housings of the HUMMEL Circular Connectors are ensuring a high power transfer on small space. Further benefits are user friendly assembly and excellent electrical characteristics of the components.

- // Highest contact reliability with SLS-Technology (Spring Loaded Socket)
- // One step cable assembly and shielding
- // Interchangeability of pin and socket inserts in every connector housing style
- // Clear and modular structure of all connector series



## M 16 (pole > 10)



- // Number of positions: 12+3, 12+6
- // Cable diameter 3 – 11 mm
- // Compact housing ( $\varnothing < 20$  mm)
- // Interchangeability of pin or socket inserts
- // TWILOCK quick connect system available

## M 23 Hybrid



- // Power, Ethernet and Signal
- // Ideal single-cable-solution
- // HIPERFACE DSL® and EnDat 2.2 BiSS
- // Easy and quick assembly
- // Up to Cat.5e
- // TWILOCK quick connect system available

## M 40 Hybrid



- // Power, Ethernet and Signal
- // Perfect for One Cable Technology (OTC)
- // Power transmission up to 55 A
- // Compact and robust design
- // TWILOCK-S: intermateable with Speedtec

## M 23 RJ 45



- // Compact RJ45-Patch cable for industrial use
- // Cable diameter 3 – 7 mm
- // Small footprint
- // Ideal as service interface
- // Also as Ex-i-version available
- // Integrated cable strain relief, protection IP 67
- // Up to Cat.5e, Cat.6a

## M 23 Profinet



- // Data transfer up to Gigabit rate, Multibus II capability
- // Cable diameter 11 – 17 mm
- // Five separate shield potentials available
- // End-to-end shielding of data inserts
- // Easy shield connections
- // Up to Cat.7

## M 8, M 12 Signal

**JAEGER**  
CONNECTEURS



- // Moulded connector cordsets
- // Straight and angled design
- // T- and Y-versions for M 12
- // Cable and panel connector housings

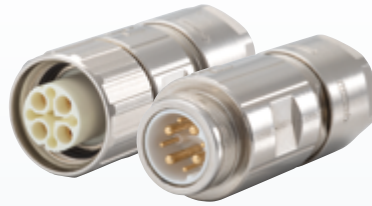
# SIGNAL / POWER

## M 12 Power



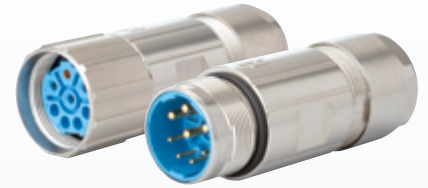
- // Maximum power density
- // Cable diameter 3–11 mm
- // Power transmission up to 630 V and 16 A
- // Robust metal housing, optional stainless steel
- // EMC-shielding in standard version
- // Coding K, L, S, T
- // Field attachable and compact design
- // Moulded connector cordsets

## M 16 (pole < 10)



- // Number of positions: 3, 6+PE, 4+3+PE
- // Cable diameter 3–11 mm
- // 20 A / 400 V or 16 A / 600 V
- // Interchangeability of pin or socket inserts
- // Crimp or dip solder contacts
- // TWILOCK quick connect system available
- // Compact design ( $\varnothing < 20$  mm)

## M 23 Power



- // Number of positions: 5+PE, 4+3+PE, 5+3+PE
- // Cable diameter 7–17 mm
- // 28 A / 600 V
- // Interchangeability of pin or socket inserts
- // Crimp contacts
- // TWILOCK quick connect system available
- // TWILOCK-S: intermateable with Speedtec

## M 23 Signal



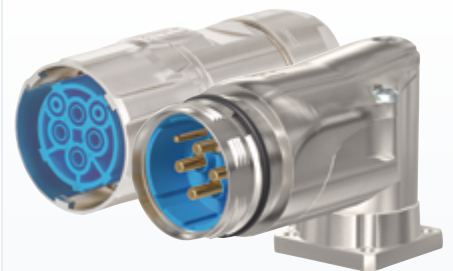
- // Number of positions:  
6, 7, 8+1, 10, 12, 16, 17, 16+3
- // Cable diameter 3–17 mm
- // Crimp, solder, dip solder or SUB-D-contacts
- // Multiple coding possibilities
- // Interchangeability of pin or socket inserts
- // TWILOCK-S: intermateable with Speedtec

## M 27 Signal



- // Number of positions: 26, 28
- // Cable diameter 7–17 mm
- // Crimp, solder or dip solder contacts

## M 40 Power



- // Number of positions: 2+3+PE, 4+3+PE
- // Cable diameter 13–28 mm
- // Nominal current up to 55 A
- // Max. 16 mm<sup>2</sup>
- // User-friendly installation
- // TWILOCK-S: intermateable with Speedtec

## TWINTUS



- // Low-cost-standard for Drives
- // Minimized size, 2 flange sizes, 2 flange height
- // Free choice of signal and power inserts
- // Designs M 16 / M 12 and M 16 / M 16
- // Perfect for daisy chain applications

## TWILOCK



- // M 16, M 23 and M 40 (TWILOCK-S)
- // Quick Connect with polygon lock
- // Multifunctional: special thread allows use of TWILOCK and screw connection
- // Resistant to vibration
- // TWILOCK-S: intermateable with Speedtec
- // Substantial reduction of connection time

## Stainless Steel (INOX)



- // M 16, M 23 and M 40
- // Housing: stainless steel V4A (AISI 316 L / 1.4404)
- // Perfect for harsh applications
- // Appropriate for food & beverage, pharma and offshore-applications

## Moulded Cordsets



- // M 8, M 12, M 16, M 23 and M 40
- // Overmoulding in various colours
- // Manipulation safe
- // Straight connectors and right angle connectors
- // Shielded or unshielded

## Customized Solutions



- // Integration of different media
- // Adaptation to specific requirements
- // Exclusive customized solutions and adaptations
- // Combination of compressed air and electrical signals in one circular connector

## Multifunctional



- // Several conductors or cables in one circular connector
- // MULTI seal connector
- // Flexible conduit connector
- // Strain relief

# CIRCULAR INDUSTRIAL CONNECTORS – JAEGER BY HUMMEL

## Standard Series

**JAEGER**  
CONNECTEURS



- // Also available as High Voltage
- // Multi pole with 3 – 52 soldering contacts
- // Screw connection
- // IP 50 – IP 54
- // Rectangular housing with 3 possible cable outlets

## Marine Series

**JAEGER**  
CONNECTEURS



- // Material: ARCAP – excellent corrosion resistance
- // Multi pole with 3 – 37 solder or crimp contact
- // Screw connection
- // IP 68
- // Waterproof: 10 bars
- // Appropriate for underwater applications and harsh environments

## Hermetic Series

**JAEGER**  
CONNECTEURS



- // Ideal for vacuum applications
- // Multi pole with 3 – 52 soldering contacts
- // Screw connection
- // Leak rate:  $10^{-9}$  Atm.  $\text{cm}^3/\text{s}$  with Helium
- // Appropriate for high pressure and gas tight applications

## Industrial Series

**JAEGER**  
CONNECTEURS



- // Robust, industrial-suited design
- // Multi pole with 3 – 27 solder or crimp contact
- // 1/6 turn quick connect system
- // IP 50 – 65
- // Rectangular / cylindrical housing

## Miniatur Series

**JAEGER**  
CONNECTEURS



- // High contact density in compact housing
- // Multi pole with 12 – 55 solder or crimp contact
- // 1/6 turn quick connect system
- // IP 50 – 65
- // Rectangular / circular housing

## Thermocouple Series

**JAEGER**  
CONNECTEURS



- // The solution for temperatur measurement
- // Several Thermocouple materials available
- // Contacts also for other Jaeger connectors available
- // Robust

# ELECTRIC COMPONENTS

## Cable Glands

Polyamide-, Brass- and Stainless steel,  
EMC-connections, Protection Ex e, Ex d, Ex ta



## Circular Connectors

M 8 to M 40, INOX, TWILOCK, Industrial Ethernet,  
Power, Signal, Hybrid-Connector, Moulded Cordsets



## Conduit Systems

Corrugated Conduit Systems, Conduit Cable Glands,  
Angled Systems, combined Cable Glands, Accessories



## Cable Assembly

Moulded Signal- and Power Circular Connectors,  
Servo Cables, Cable Sets



[www.hummel.com](http://www.hummel.com)

HUMMEL AG  
Lise-Meitner-Straße 2  
79211 Denzlingen  
Germany  
[www.hummel.com](http://www.hummel.com)

Tel. +49 (0) 76 66 / 9 11 10-0  
Fax +49 (0) 76 66 / 9 11 10-20  
E-Mail [info@hummel.com](mailto:info@hummel.com)

